

# LuX Light

LUX LIGHT SP. Z O.O., UL. DRAWSKA 62, 78-300 ŚWIDWIN, TEL./FAX: +48 94 36 559 78  
 E-MAIL: BIURO@LUXLIGHT.PL, WWW.LUXLIGHT.PL  
 NIP: 672-16-88-567, REGON:330591534

## QUBA NKPO-P LED



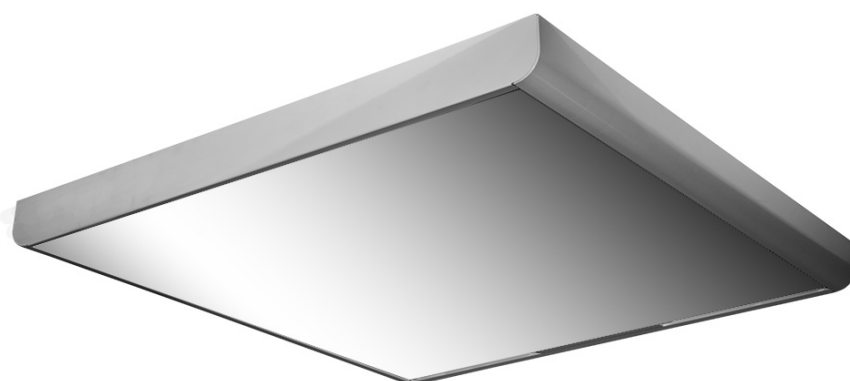
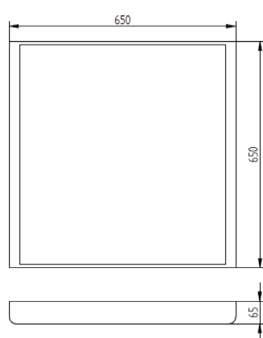
Oprawa rastrowa wyposażona  
 w moduły LED firmy PHILIPS  
 Obudowa wykonana  
 z blachy stalowej  
 Przesłona wykonana z białej pleksi  
 Montaż nastropowy



Louvre light fitting equipped with  
 LED modules from Philips  
 Housing made of sheet steel  
 Reflector made of sheet aluminium  
 Cut out size 576 x 576 mm



Rasterbeleuchtung mit LED-Modul  
 von PHILIPS  
 Gehäuse aus Stahlblech.  
 Reflektor aus Aluminiumblech.  
 Aufbaumontage.



Nazwa oprawy (Luminaire name)	Moduł LED (LED module)	Moc (Wattage)	Strumień świetlny (Lumen output)	Temperatura barwowa (Colour temperature)	Współczynnik Ra (Colour Rendering Index)	Czas pracy (Lifetime)
QUBA NKPO-P LED 2SQ 0,3k 830	Fortimo LED Square 2500lm 830 HV/LV1	45 W	4644lm	3000 K	80	50 000 h
QUBA NKPO-P LED 2SQ 0,3k 840	Fortimo LED Square 2500lm 840 HV/LV1	38 W	5000lm	4000 K	80	50 000 h
QUBA NKPO-P LED 2SQ 0,3k 865	Fortimo LED Square 2500lm 865 HV/LV1	38 W	5000lm	6500 K	80	50 000 h
QUBA NKPO-P LED 2SQ 0,7k 830	Fortimo LED Square 2500lm 830 HV/LV1	72 W	9420lm	3000 K	80	50 000 h
QUBA NKPO-P LED 2SQ 0,7k 840	Fortimo LED Square 2500lm 840 HV/LV1	70 W	10150lm	4000 K	80	50 000 h
QUBA NKPO-P LED 2SQ 0,7k 865	Fortimo LED Square 2500lm 865 HV/LV1	70 W	10150lm	6500 K	80	50 000 h